

Accessible Together

A framework of **COLLABORATION** for an **ACCESSIBLE** travel chain

Hello there!



Gabriel



Suvi



Mina



Katrina

Agenda:

Meet Sanna
Research & Analysis
Intervention

Agenda:

› **Meet Sanna**

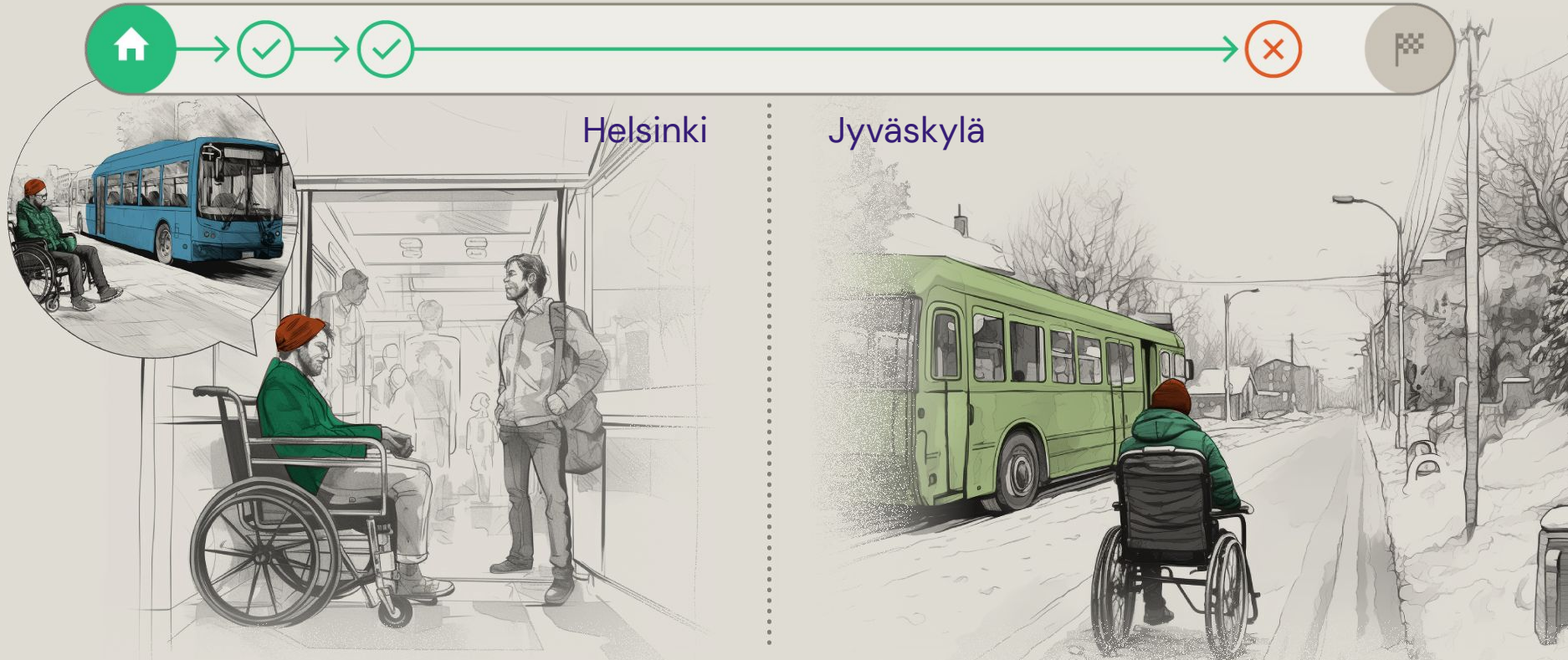
Research & Analysis

Intervention

Meet Sanna



› Non-continuous standards between big cities and regional services



How can LVM ensure impactful actions?



If one part of the journey is
inaccessible,
**the whole journey is
inaccessible.**

Quotes:

“No nationwide ownership of stations (no common services and look)”

Quotes:

"No nationwide ownership of stations (no common services and look)"

*"when it comes to some minor transport modes, there's always work to be done and we have to do these things every day because it's not that obvious that every stakeholder – which we have much of, stakeholders – [...] that **they also have this same idea of accessibility.**"*

Quotes:

"No nationwide ownership of stations (no common services and look)"

"I think there is some collaboration needed between the national government and regional local government. But the real problem is that no one is responsible of the transport system, that, totally, it is accessible."

"when it comes to some minor transport modes, there's always work to be done and we have to do these things every day because it's not that obvious that every stakeholder – which we have much of, stakeholders – [...] that they also have this same idea of accessibility."

Quotes:

"No nationwide ownership of stations (no common services and loo

"...do not collaborate that often with the ministry side of people when making new services and products."

*ink there is some
tion needed between
onal government and
ocal government. But
problem is that no one
sible of the transport
, that, totally, it is
accessible."*

*"when it comes to some minor transport modes, there's always work to be done and we have to do these things every day because it's not that obvious that every stakeholder – which we have much of, stakeholders – [...] that **they also have this same idea of accessibility.**"*

Quotes:

"No nationwide ownership of stations (no common services and lo

"...do not collaborate that often with the ministry side of people when making new services and products."

*ink there is some
tion needed between
onal government and
ocal government. But
problem is that no one
sible of the transport
, that, totally, it is
accessible."*

"when it comes to some minor transport modes, there's always work to be done and we have to do these things every day because it's not that obvious that every stakeholder – which we have much of, stakeholders – [...] that they also have this same idea of accessibility."

"...in the ideal world everyone would have the big picture in order to be on the same page. This is how collaboration can happen."

Quotes:

"No nationwide ownership of stations (no common services and lo

"...do not collaborate that often with the ministry side of people making new and products."

"We have quite a fragmented way of operating in terms of transport system accessibility."

ink there is some tion needed between onal government and local government. But problem is that no one sible of the transport , that, totally, it is accessible."

"when it comes to some minor transport modes, there's always work to be done and we have to do these things every day because it's not that obvious that every stakeholder – which we have much of, stakeholders – [...] that they also have this same idea of accessibility."

"...in the ideal world everyone would have the big picture in order to be on the same page. This is how collaboration can happen."

Quotes:

"No nationwide ownership of stations (no common services and lo

"That is something that needs more collaboration."

"when it comes to some minor transport modes, there's always work to be done and we have to do these things every day because it's not that obvious that every stakeholder – which we have much of, stakeholders – [...] that they also have this same idea of accessibility."

"...do not collaborate that often with the ministry side of people making new and products."

tion needed between national government and local government. But the problem is that no one is responsible of the transport system, that, totally, it is accessible."

"We have quite a fragmented way of operating in terms of transport system accessibility."

"...in the ideal world everyone would have the big picture in order to be on the same page. This is how collaboration can happen."

The public transport system in Finland has barriers hindering shared accessibility.

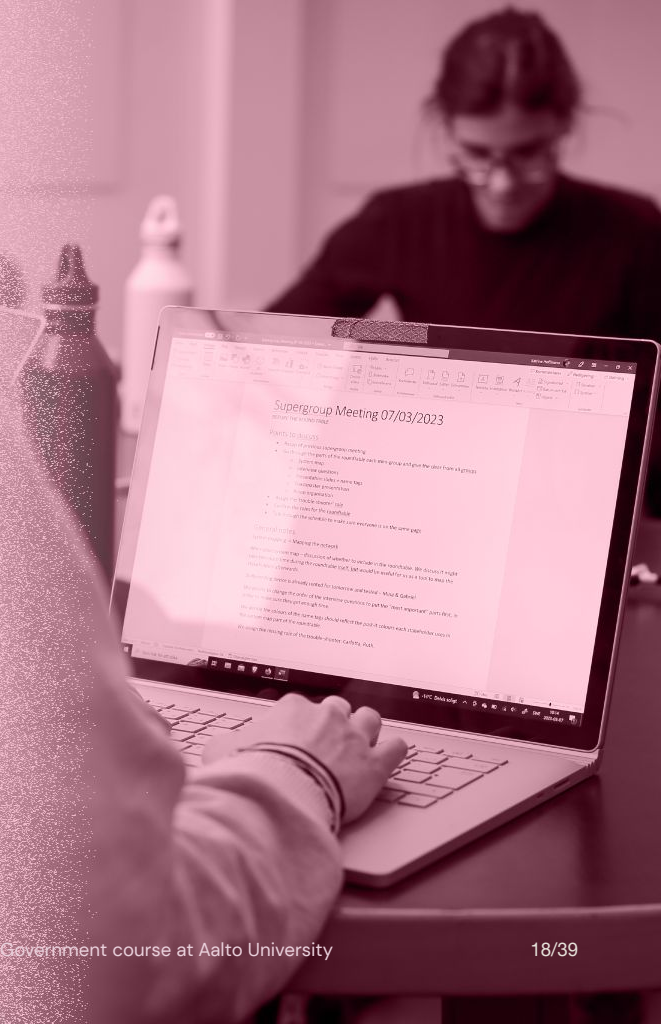
Agenda:

Meet Sanna

› Research & Analysis
Intervention

› Research / Analysis

- Desk research
- Benchmark



2

Workshops

11

Interviews with
specialists

7

Different
Organisations

Design for Government 2023



Affinity Mapping

Categorise

Connect

Evaluate

Main Insight

The current transport system **does not encourage shared work toward accessibility.**

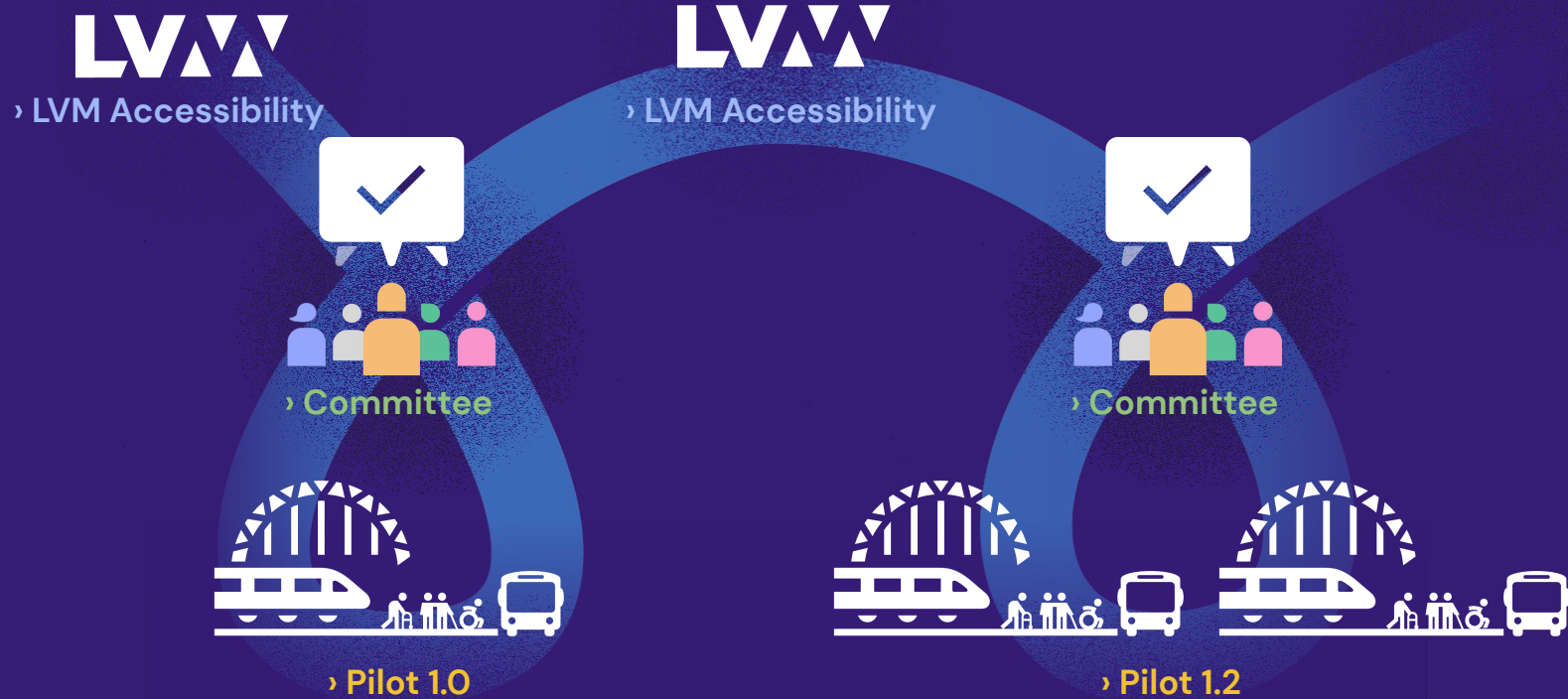
Agenda:

Meet Sanna

Research & Analysis

› Intervention

› A framework of COLLABORATION for an ACCESSIBLE travel chain



› A framework of COLLABORATION for an ACCESSIBLE travel chain

1

2

3

› A framework of COLLABORATION for an ACCESSIBLE travel chain



LVM Accessibility Branch

› Decision-Making Level

1

2

3

› A framework of COLLABORATION for an ACCESSIBLE travel chain



LVM Accessibility Branch

› Decision-Making Level

1



Accessibility Committee
(Operators, municipalities, Traficom, etc.)

› Coordination Level

2

3

› A framework of COLLABORATION for an ACCESSIBLE travel chain



LVM Accessibility Branch

› Decision-Making Level

1



Accessibility Committee

(Operators, municipalities, Traficom, etc.)

› Coordination Level

2



Pilot:

Collaborative end-to-end accessible travel chain

› Action Level

3

› A framework of COLLABORATION for an ACCESSIBLE travel chain



LVM Accessibility Branch:

- Responsible for setting up and maintaining the committee
- Acts as the final decision-maker



› Decision-Making Level

› A framework of COLLABORATION for an ACCESSIBLE travel chain



Accessibility Committee:

- LVM
- Service providers
- Invited expertise



› A framework of COLLABORATION for an ACCESSIBLE travel chain



Accessibility Committee:



Decision power
& expertise



› Coordination Level 2

› A framework of COLLABORATION for an ACCESSIBLE travel chain



Pilot:

What is a pilot?



› A framework of COLLABORATION for an ACCESSIBLE travel chain

LVW



Pilot:

Stations on a travel chain as the base



The focus is not on the pilot project but on setting up a structure for collaboration for everyone involved.

› A framework of COLLABORATION for an ACCESSIBLE travel chain

› Decision-Making Level



› LVM Accessibility



› LVM Accessibility

› Coordination Level



› Committee



› Committee

› Action Level



› Pilot 1.0



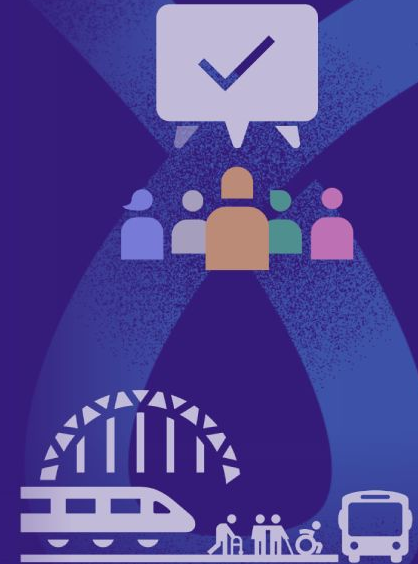
› Pilot 1.2

What is the value?

What is the value?

- Permanent structure
- Come together and work toward a common goal of accessibility
- Collaborating in a structured way
- Replicable
- Small steps are possible right away

LVW



Why do we suggest this?



Accessible Together



Group 2A: Add project title here

Scan the QR and give feedback to this project